

MUD-UK LT77 Tunnel Tray Fitting Instructions



Land Rover Solutions

+44 (0)1422-881951

www.mudstuff.co.uk

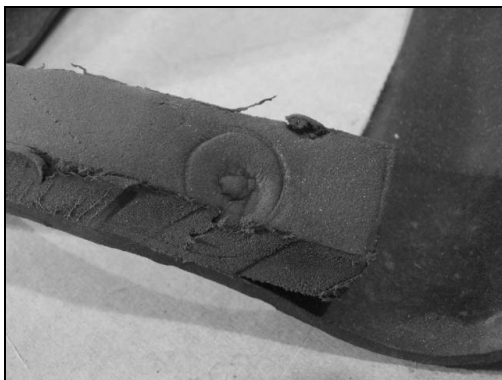
Fit the rubber edging trim around the base of the Tunnel Tray ensuring the longer side of the rubber trim fits to the inside edge of the Tray. The rubber cannot be fitted to the rear edge of the tray where the fixing screws locate.

During development of the LT77 Tray we found there was a huge variation in the size of the opening for the gear selector rubber. This will affect how snug a fit the tray is around the gear selector rubber. We have included enough rubber edging trim to go around the inside edge of the tray where it meets the gear selector rubber. Fitting the rubber edging trim to the inside edge of the Tunnel Tray will help to lose any gaps that may be present.

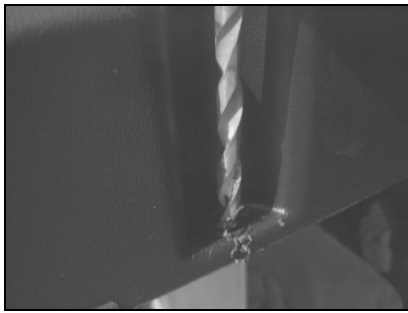
If you have a cubby box fitted, especially the steel security boxes that tend to be longer than the standard cubby box, you may need to reposition the box further back in order to provide enough clearance for the Tunnel Tray.

The Tunnel Tray is secured to the top of the transmission tunnel using the two new screws supplied with the Tunnel Tray. These new fixings replace the two rearmost fixing screws on the top of the transmission tunnel. In order to access these fixings you'll first have to remove the rubber trim covering the transmission tunnel. Remove the centre seat base (if fitted) before removing the rubber trim. Removal of the rubber trim will reveal the two screws in the top of the transmission tunnel. Remove these two screws.

The rubber trim needs drilling in order for the fixing screws to pass through it. Within the foam on the underside of the rubber trim you will find two indentations indicating the location of the two rearmost fixing screws. Drill through the rubber using a 7mm drill bit using the two indentations as a guide.



Now drill two screw holes in the Tunnel Tray at the base of each recessed moulding. Use a 7mm drill bit. The new longer screws supplied with the Tunnel Tray should pass easily through the hole without the need for them to be screwed into the plastic.



Ensuring you've removed the two rearmost screws from the top of the transmission tunnel now refit the tunnel rubber trim back onto the transmission tunnel.

Position the Tunnel Tray over the gearstick surround. Place the two longer screws supplied with the Tunnel Tray through the holes you've just drilled in the Tunnel Tray. Screw the screws through the rubber matting and down into the two fixing holes in the top of the transmission tunnel. Your Tunnel Tray is now fitted!



The two rubber cup-holder inserts are fitted with self-adhesive backing. Sticking the rubber inserts to the bottom of the cup holders is optional.

When installing 12v power sockets into the Tunnel Tray, we recommend running the supply wire direct from the fusebox or direct from the battery compartment.

When using the fusebox as the power source, route the wire under the transmission tunnel matting and use the spare fuses within the fusebox to provide a fused supply. When wiring direct from the battery, run the wiring into the cabin by making a small hole in the seatbox. Protect any wiring by using rubber grommets.

When wiring multiple sockets into the Tunnel Tray, **DO NOT** piggyback the supply feed between sockets. **Use a separate fused supply for each socket.** The HD 12v Sockets are rated at 16amps. Remember to leave a sufficient length of spare wire on the back of the sockets in order to remove the tray for cleaning or maintenance.

